



FISU
WORLD
UNIVERSITY
CHAMPIONSHIP
SPORT CLIMBING

3. BULLETIN



BOULDER | LEAD | SPEED



wucsportclimbing2022.at

Innsbruck 2022
FISU World University Championship Sport Climbing
13 – 17 June 2022
Kletterzentrum Innsbruck

Overview 3. Bulletin

1. Message of the Organising Committee (updated)	2
2. Innsbruck - the urban climbing city in the heart of the Alps	2
3. Competition Venue.....	3
4. Organisers.....	3
5. Provisional Schedule (updated)	4
6. International Technical Officials & FISU Family (new)	5
7. Competition Rules & Format	5
8. Eligibility.....	6
9. Ceremonies (new)	6
10.Registration and Fees (updated)	7
11.Visa Requirements	8
12.Covid-19 Measures (updated).....	8
13.Insurance (updated).....	9
14.Accommodation (updated).....	9
15.Catering (updated)	10
16.Transport (updated).....	11
17.Travel Itineraries.....	12
18.Cultural Program (updated)	12
19.Media Information	13
20.Training possibilities during the event (updated)	13
21.Important Contact Information (updated)	14
Appendix I: Venue Map (close-up version).....	
Appendix II: Venue Map.....	

1. Message of the Organising Committee

Dear Friends of University Sport

Innsbruck 2022 FISU World University Championship Sport Climbing is coming closer and we are looking forward to four days of thrilling competitions. Austria is very grateful for having the opportunity to organize the event from 13th June 2022 to 17th June 2022.

Innsbruck always was a “climbing city” and now prepares a warm welcome to all student climbers. The capital of Tirol is already prepared for international guests, who love the Alps.

On this occasion, we are glad to have fruitful and professional cooperation in the organizing committee and we want to give grateful thanks to the University of Innsbruck and Austria Climbing.

We are now excited with the preparations and in confident hope for bright and shiny days in Innsbruck.

A hearty welcome to our guests from all over the world
Hemma Angerer
Head of OC and Acting President Unisport Austria

2. Innsbruck - the urban climbing city in the heart of the Alps

Whether it is alpine climbing with incredible views, exciting ice climbs, or a first-class climbing experience in the new climbing center - Innsbruck and its surrounding villages have a lot to offer for climbers, beginners and pros alike. The best opportunity for training waits at the Kletterzentrum Innsbruck, a state-of-the-art indoor and outdoor climbing facility for both the climbing stars, youngsters and leisure climbers.

For years, the “climbing city” Innsbruck has been a great stop of the IFSC Bouldering World Cups series. After the Youth World Championships in 2017 and the IFSC Climbing World Championships in 2018 we are delighted to host another major event, the Innsbruck 2022 FISU World University Championship Sport Climbing.

Innsbruck, the capital of Tirol, offers a special mixture of urban flair and impressive nature thanks to its geographical location. The city is situated in the middle of the Alps and attracts its inhabitants and students with a breath-taking panorama and a wide range of different activities. Innsbruck is where city and nature as well as tradition and modernity meet. The city's special old town flair and famous sights are only a breath away from your next hike or bike tour, ski area or winter hiking experience.

The University of Innsbruck's central location on the north-south route at the heart of the Alps makes it a particularly attractive institution for the 30,000 students and 5,000 employees. The University of Innsbruck is the largest and most important research and educational institution in western Austria. The University Sport Institute Innsbruck is available to students as a service facility of the University of Innsbruck for sports activities and competitions and offers about 1,000 sports courses per academic year.

3. Competition Venue

All competitions (Speed, Lead & Boulder) for the Innsbruck 2022 FISU World University Championship Sport Climbing will take place at the Kletterzentrum Innsbruck in Austria on the outdoor-walls and an additional “mobile” Bouldering wall.

The “KI”, Kletterzentrum Innsbruck, opened its doors in May 2017, and it is one of the world's largest and most modern climbing venues. It sets new standards in terms of size, quality, and architecture. The Kletterzentrum Innsbruck will break new ground when it comes to creating synergies between recreational sports and competitive sports. For everyone, hobby- and professional climbers alike, there are 5,700 m² of climbable surface: 3,000 m² for indoor lead climbing, 1,200 m² for bouldering and 1,500 m² for outdoor climbing. The “KI” offers everything a climber's heart could possibly desire.



A detailed venue map including all points on site is available in the Appendix I & II and will also be included in the event booklet which you receive shortly before the event.

4. Organisers

Several institutions are involved in the organisation of the Innsbruck 2022 FISU World University Championship Sport Climbing:

- FISU - International University Sports Federation
- Unisport Austria
- The University of Innsbruck
- University Sport Institute Innsbruck
- Austria Climbing

5. Provisional Schedule

Sunday, 12 th	Arrival	
June 2022	Registration/Accreditation	starts at 12.00
Monday, 13 th	Arrival	
June 2022	Registration/Accreditation	08.00 – 12.00
	General Technical Meeting	14.00 – 15.30
	Opening of Speed Warm-Up Area	14.30
	SPEED Practice Men & Women	16.00 – 18.00
	Opening Ceremony	19.00
Tuesday, 14 th	Opening of Lead Warm-Up Area	07.00
June 2022	LEAD Qualification Round Men & Women	09.00 – 13.30
	<i>Cultural Program</i>	14.45 – 16.00
	SPEED Qualification Men & Women	18.00 – 19.30
	SPEED Finals Men & Women	20.15 – 21.00
	Medal Ceremony Speed Men & Women	afterwards
Wednesday, 15 th	Opening / Closing of Isolation Zone	08.00 / 09.00
June 2022	Observation	09.45
	LEAD Semifinals Men & Women	10.00 – 12.30
	<i>Cultural Program</i>	13.45 – 16.30
	Opening / Closing of Isolation Zone	17.00 / 18.00
	Presentation & Observation	18.45
	LEAD Finals Women	19.00 – 20.00
	LEAD Finals Men	20.00 – 21.00
	Medal Ceremony Lead Men & Women	afterwards
Thursday, 16 th	Opening / Closing of Isolation Zone	07.00 / 08.00
June 2022	BOULDER Qualification Round Women	09.00 – 12.00
	Opening / Closing of Isolation Zone	12.00 / 13.00
	BOULDER Qualification Round Men	14.00 – 17.15
	<i>Cultural Program</i>	14.45 – 17.30
	Reception held by the rectorate* (event for Head of Delegation)	Entry + appetiser 18.00 Start 19.00
Friday, 17 th	Opening / Closing of Isolation Zone	08.00 / 09.00
June 2022	BOULDER Semifinals Men & Women	10.00 – 12.30
	Opening / Closing of Isolation Zone	15.30 / 16.30
	Presentation & Observation	17.30
	BOULDER Finals Men & Women	17.45 – 19.30
	Medal Ceremony Boulder Men & Women	afterwards
	Closing Ceremony	approx. 20.10
Saturday, 18 th	Departure	
June 2022		

*Head of Delegations already received an invitation for the reception held by the rectorate on Thursday, 16th of June. The attendance of two members of your delegation is expected and highly appreciated - please confirm your attendance via Mail to delegations@wucsportclimbing2022.at until May 23rd.

Registration/Accreditation

- All delegations must be registered by Monday, 13th June, 12pm. Your registration slot is depending on your arrival. Therefore, we will create a schedule for the Registration after we receive the Travel Plans.
- According to this schedule, transport to the registration will be organized and communicated to all NUSF individually.
- The registration is done by the **head of delegation**, athletes and other officials do not need to be at the event venue for this process, but are welcome to join/assist.
- The original passport needs to be brought to the registration process. Additionally, the academic eligibility form of participants might be necessary.
- All team managers (head of delegation) need to take part in the General Technical Meeting at 2pm on Monday, other officials and athletes are welcome.

6. International Technical Officials & FISU Family

International Technical Officials

- IFSC Technical Delegate: Graeme Alderson (GBR) | graeme@climbingworks.com
- Jury President: Jérôme Chapelle (FRA) | jejechapelle@wanadoo.fr
- Judge: Artur Polanski (POL)
- Chief Routesetter Boulder: Jamie Cassidy (GBR)
- Chief Routesetter Lead: Alberto Gnerro (ITA)

FISU Family

- CISCA Chair: Kemal Tamer (TUR)
- CIC: Indre Celkiene (LTU)
- FISU TCC: Alessandro Di Cato (ITA)
- CMI: José Luis Terreros
- OC Member: Gernot Hupfau (AUT)

7. Competition Rules & Format

The FISU Regulations for World University Championships and the most recent technical regulations of the International Federation of Sport Climbing (IFSC) will be applied in the event and can be found on the respective website.

Doping controls

Doping controls during the Championship will be organised by FISU in accordance with FISU and IFSC guidelines. They will be performed on site of the event after finals of each discipline. Every athlete has the right to choose an accompanying person. After the doping control, athletes will be taken back to their hotel with a shuttle car. The final number of tests will be communicated during the General Technical Meeting.

8. Eligibility

Only competitors who satisfy the following conditions may take part in a FISU World University Championship in 2022:

- be at least 18 and no older than 25 years of age on December 31st in the year of the event; for 2022, athletes must be born between the 01/01/1997 and the 31/12/2004
- be students who are currently officially registered as proceeding towards a degree or diploma at a university or similar institute whose status is recognised by the appropriate national academic authority of their country

OR

- be former students of the institutions mentioned above, who have obtained their academic degree or diploma in the year preceding the event

Each country may enter a maximum of 30 athletes, 5 per gender and discipline.

The delegations may register a maximum of 5 team officials. These officials must be specifically nominated for one of the following roles:

- one team manager (Administration Official)
- two team coaches (Sport Officials)
- two qualified medical or para-medical personnel (Medical Officials)

Every competitor must have an IFSC international licence that is valid for the year of the Championship and issued by his/her national federation, which shall be affiliated to the IFSC.

9. Ceremonies

We are excited to celebrate the opening and closing ceremony together with all participants of the event. Therefore, **the attendance of all accredited athletes and officials is required for the opening and closing ceremony.**

The following points are important during the Opening and Closing Ceremony and need to be followed:

- Bags and sport equipment are strictly prohibited on stage
- Marching athletes and delegation officials must wear their official delegation uniform (dressing up is not permitted)
- Banners are forbidden (and will be seized)
- Only (fully accredited) delegation members can take part in the march-in of the teams
- Closing Ceremony: "Thank you" banners are allowed, but must be submitted to FISU for approval four days prior to the closing ceremony

March in of participating countries at the Opening Ceremony: Each delegation will be preceded by a volunteer holding a placard displaying the name of the country and accompanied by its flag (carried by an athlete). A rundown of the ceremonies will be communicated at the General Technical Meeting.

Closing Ceremony

The closing ceremony is going to take place after Bouldering finals and the Bouldering medal ceremony. Therefore, the start of the closing ceremony depends on the duration of the finals, and we cannot set a fix time for the start. Please consider the time stated in the schedule as an estimate. **In order to have all delegations at the closing ceremony, we ask you to be at the event venue early.**

Award Ceremony

The attendance of all medal winners is mandatory at the respective award ceremony. No caps, flags and no elements that can symbolise any political or religious affiliation are allowed during the award ceremony. For all other participants, it is desired that as many as possible take part in the award ceremony as spectators and cheer for the medalists.

10. Registration and Fees

Deadlines for Registration:

General Entries February 13th, 2022

Quantitative Entries March, 13th, 2022

25% deposit of participation fees

Individual Entries May, 13th, 2022

**Names of all participants &
travel schedule of the delegations**

→ **Individual Entry** means that the name of each participant (athletes and officials) as well as the travel schedule and the arrival and departure time needs to be registered in the Online Accreditation System: <https://accreditation.fisu.net/Pages/Home.aspx> until May 13th, 2022.

If you need to make any changes to the already submitted Quantitative Entry or have any other issues with the Accreditation System, please message delegations@wucsportclimbing2022.at as well as a.guerra@fisunet and championships@fisunet. Any changes within the system needs to be performed by FISU – therefore, copying them on your mail is going to speed up the process and allows us to implement those changes quickly.

Participation Fees:

Generally, all delegations, who submit the Quantitative Entry agree to attend the event and pay the participation fee. The **participation fee is 70 EUR per day per person**. It covers all services provided from arrival until the departure day including transport in Innsbruck, accommodation, food & drinks.

The fees are invoiced based on the following conditions:

- The departure day (June 18th) will not be charged because on this day the organizing committee only provides breakfast and transport to the Main Station or Airport
- A minimum of 5 days will be charged to the NUSF (Monday, 13th to Friday, 17th)
- The final payment will be calculated depending on your arrival/departure day
- Any changes in number of participants since the payment of the deposit will be considered in creating the final amount
- If due to international transaction fees a small fee is still outstanding, the remaining fee will be collected at the registration on-site

The full **participation fee** will be invoiced to the registered NUSFs after we receive the Individual Entry. You will receive an invoice with payment details via mail to the same address we used for the deposit. We appreciate a fast transaction and are happy to help if you have any questions. Please note, that the deposit is not refundable.

11. Visa Requirements

Citizens of EU member states, European Economic Area (EEA) and Switzerland do not need a visa for entering the Republic of Austria. Nationals of other countries might require a visa in order to enter the Schengen Area or the Austrian territory.

More information and an overview of visa requirements per country can be found following these links:

- <https://www.bmeia.gv.at/en/travel-stay/entry-and-residence-in-austria/entrance-and-residence/visa/>
- https://www.bmi.gv.at/202/Fremdenpolizei_und_Grenzkontrolle/Visumpflichtige_Laender/files/EN_HP_BMI_Visaliste_aktuell_BF_20220429.pdf

If you need invitations for a visa, please contact delegations@wucsportclimbing2022.at and send us the following details:

- | | | | |
|-------------------|-----------------------------|-------------------------|----------------|
| • First Name | • Last Name | • Date & Place of Birth | • Nationality |
| • Passport Number | • Expiration Date | • Address | • Phone / Mail |
| • Occupation | • Place of Visa Application | | |

We need this information from every athlete and official registered for the event. Please send these details to us summarized in one email, most conveniently in table-format, we will then send you one invitation letter for the whole delegation.

12. Covid-19 Measures

Due to the easing of the epidemiological situation in Austria, most protective measures were already lifted or relaxed. In order to provide you with a detailed overview on the rules still in place, a Health and Safety Plan (separate document) will be published on our website and sent to you via Mail.

Event Restrictions: (as of May 2nd, 2022)

To ensure the safety of all participants the [ADDENDUM TO IFSC RULES](#) provides Covid-19 guidelines for international sport climbing events. Those regulations will be implemented during the Innsbruck 2022 FISU World University Championship Sport Climbing.

This means accredited persons **must wear a mask indoors** at all times, except when climbing/exercising. In case we need to lay down additional measures to assure your safety, we kindly ask all of you to follow the rules precisely.

Travel Restrictions: (as of May 2nd, 2022)

For entering Austria, people need to be either **vaccinated, recovered, or tested**.

- **Vaccinated** = with a vaccine authorised by EMA and mentioned in the Austrian law ([here](#)).
 - The second dose of a vaccine and any subsequent vaccination will be recognised for up to 270 days after they are received
 - Between 22 – 270 days after a vaccination with a vaccine where only 1 shot is intended (Johnson&Johnson)
- **Recovered** = confirmation from a doctor or public authority of having recovered from the infection with Covid-19 in the last 180 days.
- **Tested** = molecular biological test (PCR-Test) taken no longer than 72 hours ago OR antigen-test taken no longer than 24 hours ago (self-tests are not allowed).

Due to the pandemic, visa and entry requirements may vary. Please inform yourself early about the visa requirements and contact delegations@wucsportclimbing2022.at if you have any questions in this regard.

General restrictions in Austria

FFP2 masks are obligatory in the following enclosed rooms/situations

- customer areas of supermarkets, pharmacies, drugstores, gas stations,... ("essential shops")
- public transport and its stops as well as taxis (therefore, a mask needs to be worn in our shuttle buses)
- Hospitals and comparable settings
- administrative authorities in the case of correspondence
- religious facilities, unless they are being entered for the purpose of a religious celebration

Other than that, no masks need to be worn. However, we still recommend wearing a mask in enclosed spaces, where the minimum distance cannot be maintained. A proof of vaccination/recovery/negative test ("3-G") is only necessary when visiting a hospital or a comparable setting and for travelling.

13. Insurance

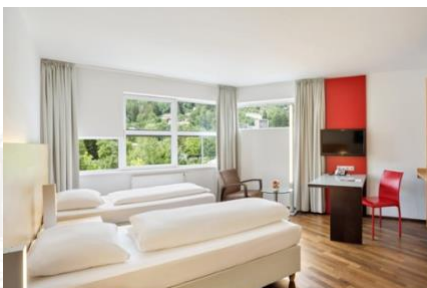
The participating countries must have the appropriate travel and health insurance, as they are not the responsibility of the Organizing Committee nor FISU. Furthermore, we strongly recommend the teams to include the potential cancellations of tickets due to Covid to their insurance.

14. Accommodation

Accommodation for all participating athletes and officials will be in one of the following hotels. Depending on your travel schedule **the organizing committee is going to allocate each team to one of the hotels and arrange further details**. If you have any questions about accommodation, please do not contact any of the hotels, but message us directly: delegations@wucsportclimbing2022.at

Austria Trend Hotel Congress

Rennweg 12a
6020 Innsbruck



Alphotel Innsbruck

Bernhard-Höfel-Straße 16
6020 Innsbruck



Hotel Binders

Dr. Glatzstrasse 20
6020 Innsbruck



15. Catering

Breakfast

Breakfast will be served at the respective accommodation. The restaurant opening hours will be adapted to accommodate the event schedule and ensure that athletes and officials will be able to eat before leaving to the competition venue. All hotels offer a buffet-style breakfast with a variety of products.

Lunch & Dinner

Lunch and dinner for all client groups will be served directly at the competition venue in a designated food and beverage area. The food will be offered buffet-style, so everyone can choose their own meal. One can decide between dishes with meat or vegan/vegetarian ones as well as choose from a selection of salads. We are going to offer a variety of fresh and regional products to make sure athletes can fuel properly. In order to allow all participants to eat their meals, the opening hours will be adjusted to the daily competition program. Also, different drinks will be available.

Snacks

To ensure the best preparation possible, snacks like fruit, granola bars and/or sandwiches will be offered in the warm-up/isolation area for athletes and officials. Tap water will also be always available. Tap water is of very good quality in Innsbruck and we encourage you to prefer it over plastic water-bottles.

If athletes or officials have special needs (for example due to dietary restrictions and/or religious beliefs) please get in touch with us via delegations@wucsportclimbing2022.at so we can prepare accordingly!

Lunch and dinner will be served at the dining area on the event venue to the following times:

Monday	13.06.22	Lunch	12:00 - 12:45	FISU, OC, Staff
			12:45 - 14:00	Delegations
		Dinner	19:30 - 22:00	FISU, OC, Staff, Delegations
Tuesday	14.06.22	Lunch	12:00 - 13:00	FISU, OC, Staff, Delegations
			13:00 - 15:00	Delegations
		Dinner	17:30	Delegations
			18:30 - 20:30	FISU, OC, Staff, Delegations
Wednesday	15.06.22	Lunch	12:30 - 14:00	FISU, OC, Staff, Delegations
			13:30	Delegations (Cultural Program)
		Dinner	18:00	Delegations
			17:30 - 20:00	FISU, OC, Staff, Delegations
Thursday	16.06.22	Lunch	11:00 - 14:00	FISU, OC, Staff, Delegations
			14:00	Delegations (Cultural Program)
		Dinner	17:30 - 20:00	Delegations, OC, Staff
Friday	17.06.22	Lunch	12:00 - 14:00	FISU, OC, Staff, Delegations
			20:45 - 22:00	FISU, OC, Staff, Delegations

Please note that for athletes and officials, who are in isolation zone during Lead finals as well as during some days of the cultural program and the speed event, a packed lunch will be provided. More information will be communicated during the General Technical Meeting.

16. Transport

How to get to Innsbruck

You can get to Innsbruck by car, airplane or train. The official arrival points in Innsbruck are the **Airport Innsbruck** and the **Main Station Innsbruck**, where you will be welcomed by our Volunteers. As soon as you arrive there, your transport and other services are arranged by the Organising Committee. Travel to and from those arrival points has to be arranged independently. If you arrive by car and need to book a parking space in advance, you can contact us in order to arrange something with the respective accommodation.

Transport in Innsbruck - free public transport in Innsbruck

All team members with a valid accreditation to the Innsbruck 2022 FISU World University Championship Sport Climbing will be able to use public transport in Innsbruck for free. Because public transport is well-developed it is easy to get from the accommodation to the competition venue by bus. In order for your delegation to use the public transport on your arrival day for free (without the accreditation) you will receive a voucher via mail the week before the event. This voucher (12th – 13th of June) or your accreditation (13th – 18th of June) needs to be carried along on all rides with public transportation.

10 days before the competition you will receive a booklet with a detailed bus schedule, explaining which lines of public transport you can take to get to/from your accommodation to the event venue.

There will also be a WUC shuttle bus that runs between the accommodation and the competition venue in the morning and evening (more information on the exact times are also going to be published in the booklet). This shuttle bus is free for accredited delegation members and the easiest way to travel around.

Please note: We recommend using the shuttle bus or public transportation. At the event venue NO parking spaces are available for the delegation members.

Arrival and Departure

According to the arrival and departure schedule and your respective accommodation we are going to arrange transportation from/to the airport or train station to the accommodation either by a special shuttle-bus or by public transport.

17. Travel Itineraries

The detailed planning process for accommodation and transport is hugely dependent on the delegation's travel itineraries. Therefore, delegations should notify the Organizing Committee as soon as possible about their arrival and departure (dates, times, flight numbers, etc.) in order for the Organizing Committee to arrange the transportation from/to the airport/train station.

The travel details are submitted during the Individual Entry at the Online Accreditation System: <https://accreditation.fisu.net/Pages/Home.aspx>.

18. Cultural Program

Two different guided tours will be offered: one cultural tour and one mountain-sunset-tour. Each tour is going to be open for a maximum of 20 accredited people and registration for the tour will be via Mail. Please contact delegations@wucsportclimbing2022.at stating which tour you would like to be a part of to reserve a spot.

TOUR I: ON TOP OF INNSBRUCK (2.344 M ABOVE SEA LEVEL)

A guided tour for the student athletes to the highest situated sight in Innsbruck will take place. Stations are Hungerburg, Seegrube and Hafelekar (Karwendelblick). The tour starts in the centre of Innsbruck, continues by funicular railroad to the panorama viewing platforms, and finalizes at the return journey with a picnic (lunch packages) at the lookout terrace Seegrube (1.905 m sea level).

Event Days:

- Wednesday, 15th June 2022, 13:45 – 16:30 h, ~20 participants
- Thursday, 16th June 2022, 14:45 - 17:30 h, ~20 participants

TOUR II: IMPERIAL PLACE INNSBRUCK

A guided tour for the student athletes through the Kaiserliche Hofburg Innsbruck, including the staterooms of empress Maria Theresia (important reigning personality in Austrian history until 1780), imperial apartments from the 19th century and the Giant Hall.

Event Days:

- Tuesday, 14th June 2022, 14:45 – 16:00 h, ~20 participants
- Thursday, 16th June 2022, 15:45 -17:30 h, ~20 participants

An overview of other highlights in Innsbruck (sightseeing, restaurants,..) will be presented in the booklet, which you will receive shortly before the event.

19. Media Information

The official website for the Innsbruck 2022 FISU World University Championship Sport Climbing is online: <https://www.wucsportclimbing2022.at/>.

You can also find us here:

@fisuportclimbing on Instagram

2022 FISU World University Championship Sport Climbing or @FISUSportClimbing on Facebook and

If you are a media representatives, you can find a guide on how to register for an accreditation on our [website](#) or by contacting accreditation@wucsportclimbing2022.at

20. Training possibilities during the event

Those who want to train in a commercial facility before or during the event can do so at different climbing gyms. Depending on the discipline you want to train, you can visit:

- [Kletterzentrum Innsbruck](#) (climbing center Innsbruck - all disciplines)
- USI - [University Sport Institute Innsbruck](#) (multi-sports facility including climbing walls)

Note: USI and Kletterzentrum Innsbruck can be used for free (more information below)

- [Bergstation Telfs](#) (bouldering and lead climbing) – paid entry
- [Imst Climbing Center](#) (lead climbing and speed) – paid entry
- [Steinblock Imst](#) (bouldering) – paid entry
- [Kletterhalle Wörgl](#) (bouldering and lead climbing) – paid entry

Every holder of an accreditation card is granted full access to the infrastructure of Campus Sport (USI) as well as full access to all recreational sport classes held by the University Sport Institute of Innsbruck (USI) at Campus Sport **for free** during their stay.

Furthermore, we provide all accredited delegation members entry to the Kletterzentrum Innsbruck from Monday June 13th – Friday June 17th. You will receive an entry card at the registration and can use it to train during the usual opening hours from 09:00 – 22:00 **for free**.

Due to routesetting and construction work at the venue the possibility to train at Kletterzentrum Innsbruck in the weeks leading up to the event, and especially during the event, will be limited. In case you plan to stay in Innsbruck for training purposes, please note that the IFSC Climbing World Cup will be hosted at Kletterzentrum Innsbruck from 21st to 26th of June and restrictions apply. If you are interested, we can send you a detailed overview on the restrictions at the Kletterzentrum via Mail.

21. Important Contact Information

If you have any questions, please do not hesitate to contact us:

delegations@wucsportclimbing2022.at

Contact for: Visa Invitations
 Travel Itineraries
 Accommodation/Food & Beverage for Delegations
 Confirmation of Attendance for the Reception held by the Rectorate
 Registration Cultural Program

office@wucsportclimbing2022.at

Contact for: General Questions & Enquiries

General Emergency Number: 112

Ambulance: 144

Police: 133

Fire Brigade: 122

Event Office: +43 512 55 23 20 31 (on call 24 hours during the event from 12th – 18th June)

Dr. Christoph Kampleitner: Event Emergency Doctor

If you have any questions before the event for Dr. Christoph Kampleitner, please contact

delegations@wucsportclimbing2022.at

We are looking forward to welcoming you in Innsbruck for the Innsbruck 2022 FISU World University Championship Sport Climbing!

Innsbruck 2022 FISU World University Championship Sport Climbing

Austria Climbing

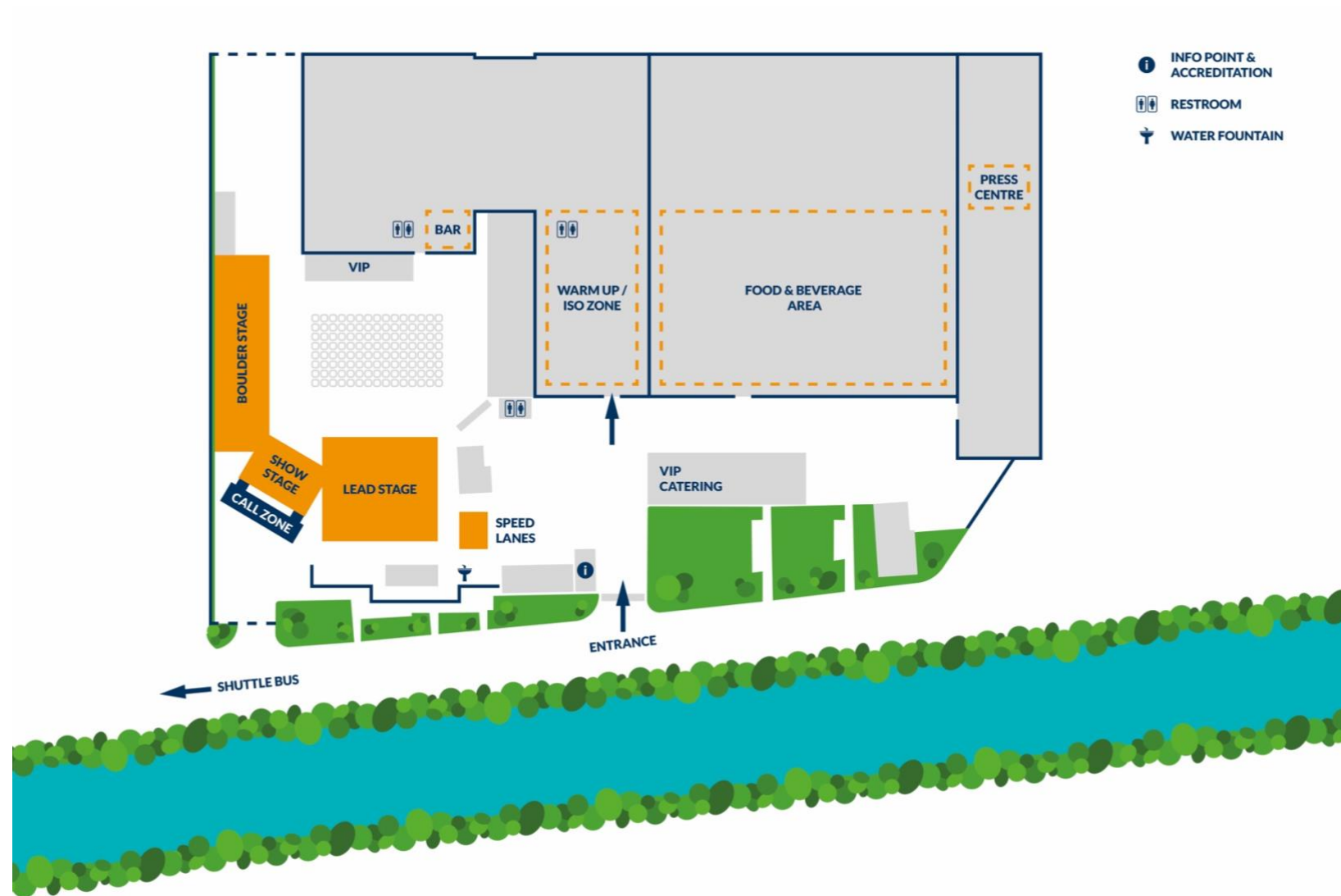
Matthias-Schmid-Straße 12E

6020 Innsbruck

Mail: office@wucsportclimbing2022.at

Phone: +43 (0) 512 55 23 20

Appendix I: Venue Map (close-up version)



Appendix II: Venue Map

Please note: This map gives you an overview on where to go, if you would like to use the shuttle bus. The bus stop for the shuttle bus is within a 3-minute walking distance from the competition venue and it will be clearly marked as the shuttle bus stop.

