



**October 17, 2021**

**INTERNATIONAL AND NATIONAL  
CHAMPIONSHIP OF THE CZECH REPUBLIC  
AND THE CZECH YOUTH CHAMPIONSHIP U14**

# **SPEED CLIMBING**

**Date:** October 17, 2021

**Venue:** climbing center HUDY Brno,  
Vídaňská 99/270, Brno, 639 00

**Organizer:** Czech Mountaineering Association

**Organized by:** HO Lokomotiva Brno

**Pre-registration:** find in the calendar at [www.horosvaz.cz](http://www.horosvaz.cz)

**Discount on registration fee until:** October 9, 2021  
payments to bank account **1727209504/0600**

## **REGISTRATION FEE:**

Member of Czech Mountaineering Association:

CZK 200 for pre-registered

CZK 300 on the venue

Non-member of Czech Mountaineering Association:

CZK 300 for pre-registered

CZK 400 on venue

## PROGRAMME

9am - 10am registration  
10:30am - 1pm start of the race  
13:30pm - 3pm finals

The organizer reserves the right to change the schedule.

Judge: **Kateřina Růžicková 775666710**

Technical Delegate: **Michaela Palová 776259948**

Race director: **Radek Lienerth 603 810 600**

### **Competitors' consent:**

„The competitor expressly agrees by registering and participating in the race with the fact that Czech mountaineering association or his contractual partner may acquire photography, audio or video records of the competitors in connection with the race. These materials can be further used for propagation or publication.

Every person entering the venue and premises sports ground related agrees with the fact that Czech mountaineering association or his contractual partner may acquire photography, audio or video records of the competitors in connection with the race. These materials can be further used for propagation or publication.

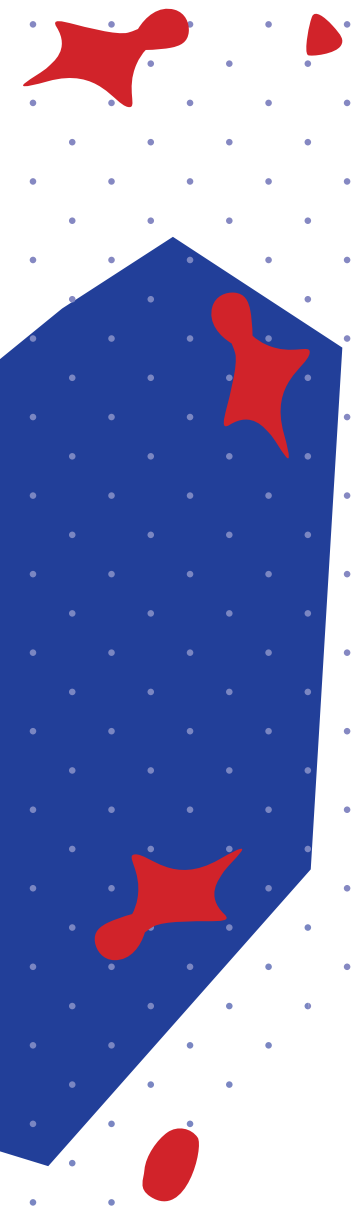
The race takes place according to the valid rules of competitive climbing

and implementing rules for adult and youth competitions.

Czech competitors of youth categories must be members of the Czech mountaineering association.



All competitors must have a valid medical examination according to Decree 391/2013 Coll.



jihomoravský kraj



NÁRODNÍ  
SPORTOVNÍ  
AGENTURA

B | R | N | O

